



Oregon Traffic Incident Management

Presented by: Justin Guinan, Oregon TIM Program Coordinator
March 2019



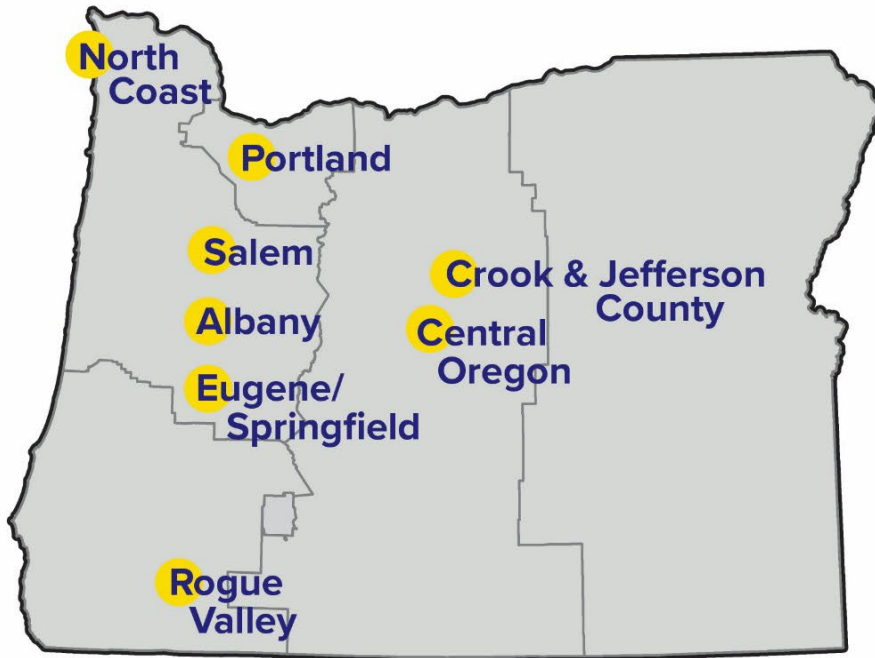
Regional Teams



Oregon TIM Team Locations



Contact your local TIM Team representative for more information.
All responders welcome!



North Coast, Salem, Albany, Eugene/Springfield

Ricky Love
971.719.6269
ricardo.love@odot.state.or.us

Portland

Geoffrey Bowyer
503.731.4703
geoffrey.l.bowyer@odot.state.or.us

Rogue Valley

Jeremiah Griffin
541.774.6352
jeremiah.m.griffin@odot.state.or.us

Central Oregon

Tim McGinnis
541.388.6301
timothy.mcginis@odot.state.or.us

Crook & Jefferson County

Josh Goodell
541.447.4357
joshua.goodell@odot.state.or.us

North Coast TIM Team

Oregon Department of Transportation, 855 Airport Rd, Bldg P, Salem, OR 97301
Ricky Love, Operations & Emergency Services Manager, ricardo.love@odot.state.or.us, 503.986.2812

You are invited to attend the North Coast TIM Team Meeting



Regional Traffic Incident Management Teams meet quarterly, at various locations across Oregon. The cross-discipline teams take a proactive approach to improving the local understanding of roles, responsibilities and capabilities between response agencies such as Fire, EMS, LE, Transportation, Tow and Public Works. The teams serve as local champions - improving scene coordination, communication and collaboration while advancing safe, quick clearance of all roadway incidents.



AGENDA ITEMS TYPICALLY INCLUDE:

TIM Performance Measures Review; incident trends, clearance times, and incident "hot spots" reports are presented.

After Action Review; recent incidents are reviewed by the multi-agency team with the purpose of identifying potential safe, quick clearance improvement opportunities.

Orange Cone Initiative; current construction and maintenance projects are discussed in reference to their potential impact to response efforts.

Training Opportunities; discussion around training, outreach & education events to advance coordination, communication and collaboration.

Statewide TIM Program Updates; each TIM team acts as a conduit to our Statewide TIM Program, providing insight to shape future initiatives and program activities.

Other Items as Identified by the Team;

WE DO NOT MEET FOR THE SAKE OF MEETING, WE MEET FOR ACTION

We are always looking for enthusiastic, dedicated individuals who willingly offer their energy and experience to actively improve the safety and efficiency of local response to roadway incidents. The teams are open to all responders and there is no cost to participate.

If your agency or company is interested in attending a meeting in your area and you would like more information, please contact:

Join us!

Where:

When:

KEEP UP WITH THE OREGON TIM PROGRAM



[Facebook](#)



[Eventbrite](#)



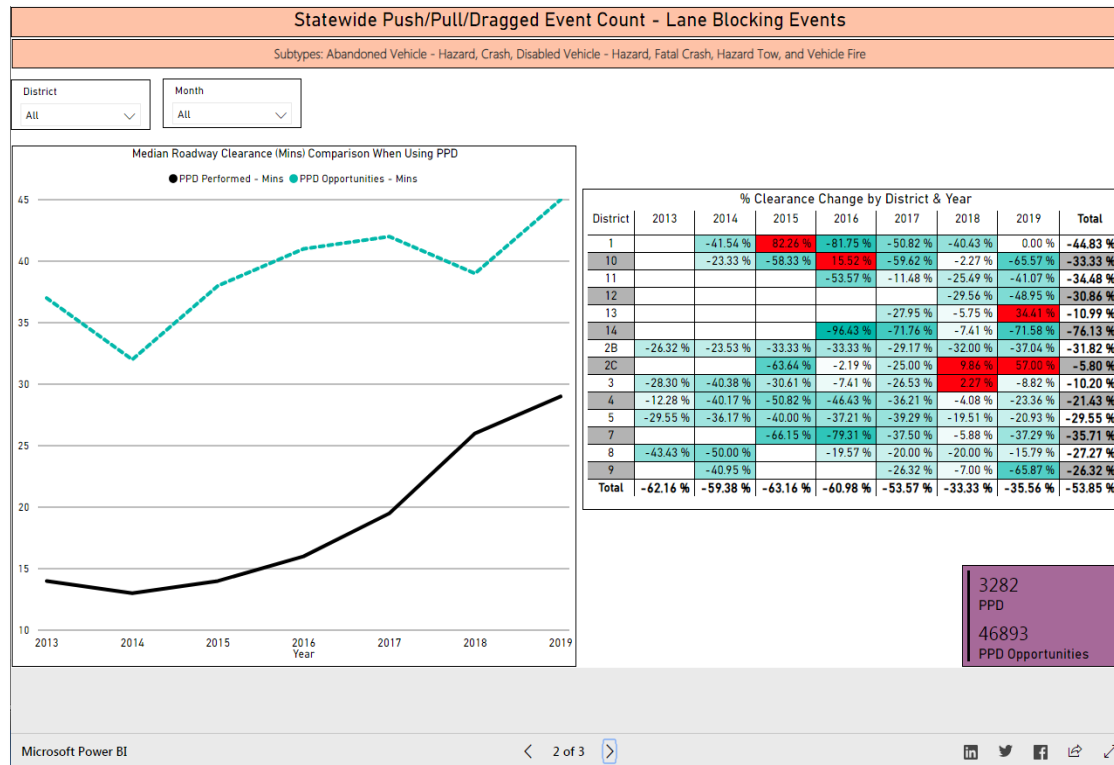
[Website](#)



Performance Measures



Push, Pull & Drag



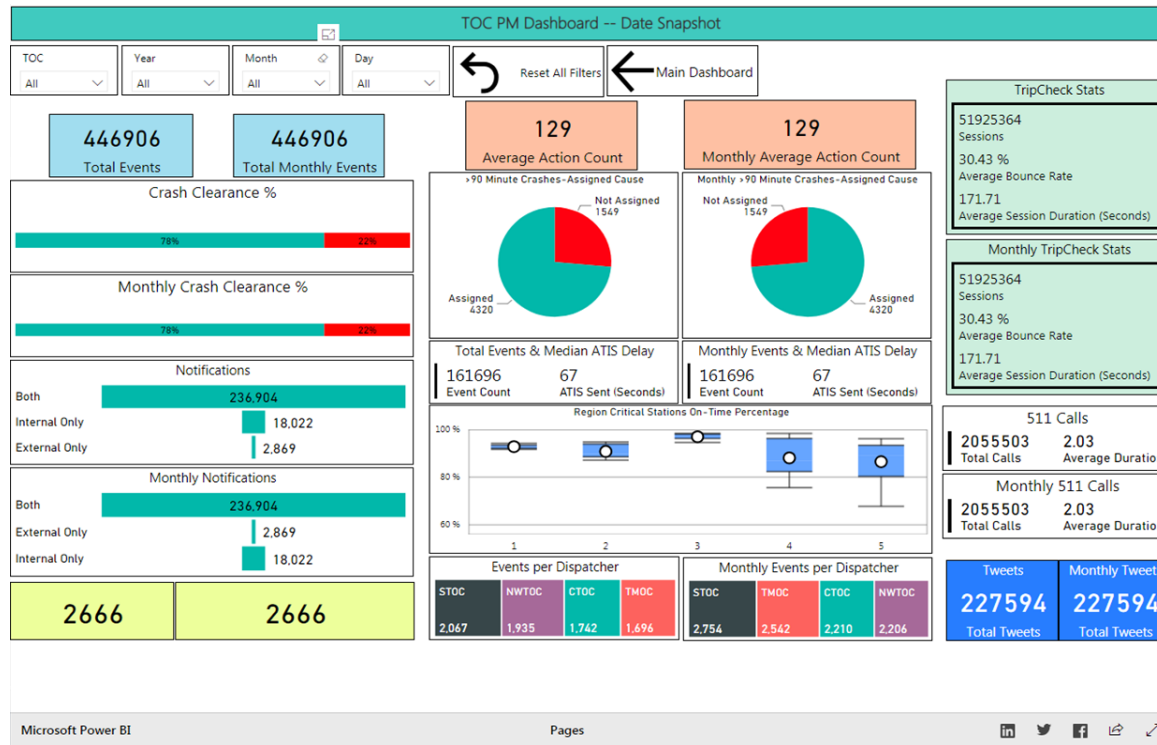
Provides up to date information

Shows the percentage of reduction in median clearance duration

Based off specific subtypes that provide an opportunity for PPD



TOC Dashboard



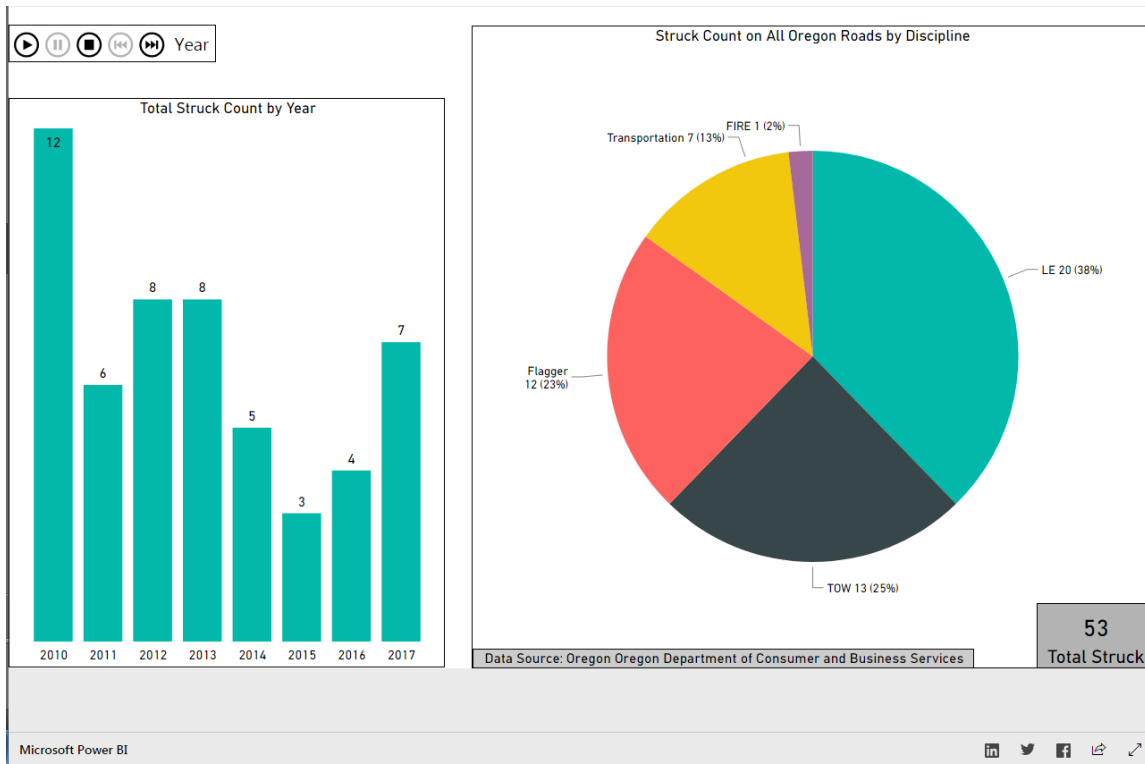
Allows day to day performance

Social media outlet posting

ATIS delays for events



Struck-By Data



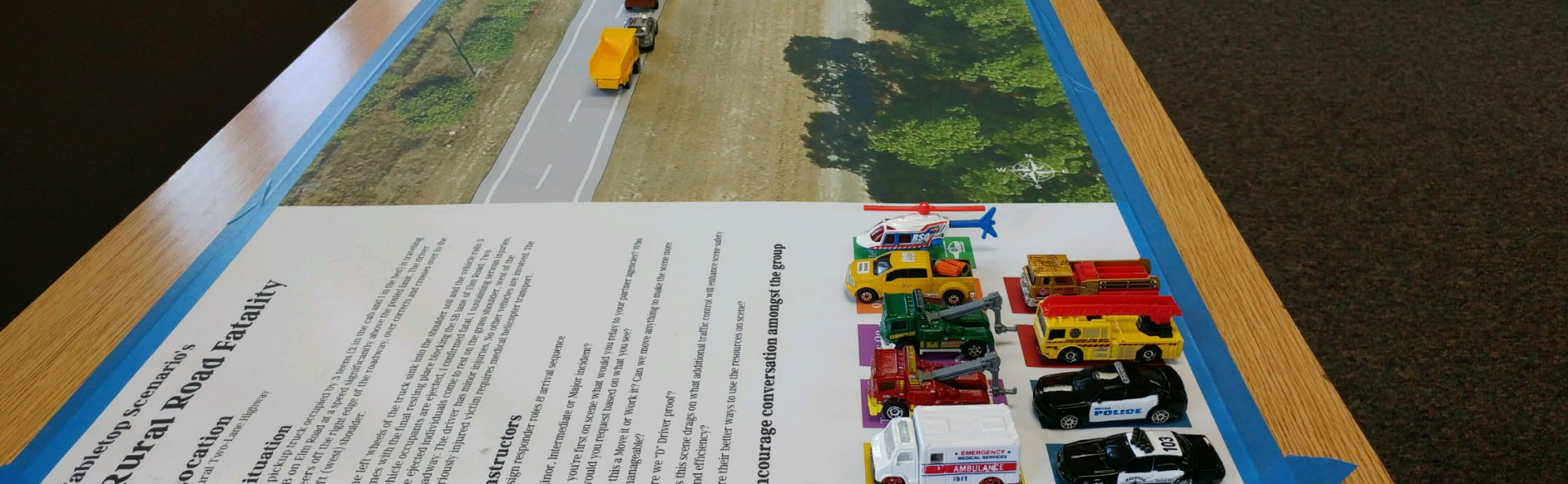
Working on refining the struck-by data with OSHA

Working on other insurance outlets for data as well



Next Steps





ODOT TIM Program

Strengths

TIM Strategic Plan

Data/
Performance
Measures

TIM Training





ODOT TIM Program

Strengths

TIM
Stakeholder
Communications

Partnerships



ODOT TIM Program

Opportunities

Regional TIM
Teams

Tracking
Secondary
Crashes

Abandoned
Vehicles with
no Salvage

Refining
Struck-By
Data



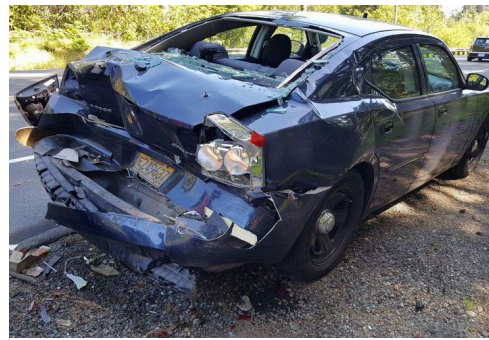
TIM Strategic Plan



PR02:
Push, Pull &
Drag
Program



SC05:
TIM Team
Development



SE05:
Track
Responder
Struck-By and
Fatalities



RT02:
Unified TIM
Training at
Academies



Justin Guinan

Justin.guinan@odot.state.or.us

503.986.3475

Thank you.